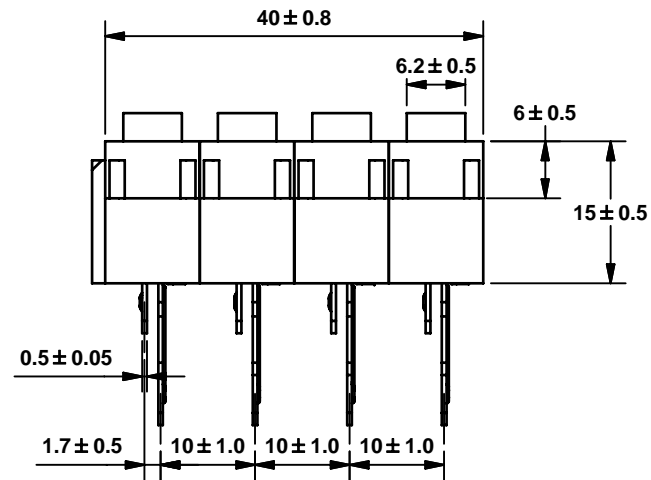
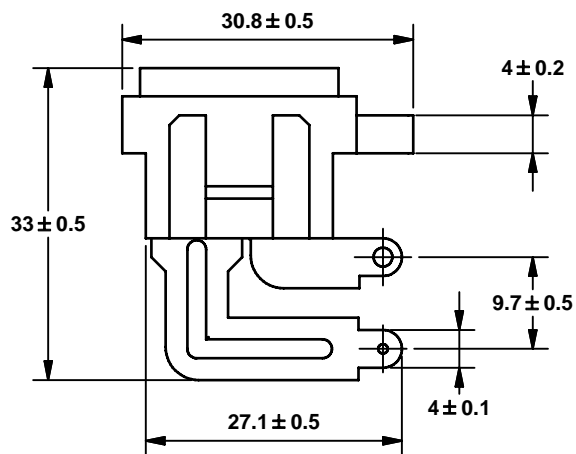





△ Recommended hole dimensions



Housing Material: Nylon PA66
 Terminal Brass bright tin plated
 Thickness:0.5mm
 Electrical:Use Blade Autofuse ATU Max.30A

UNLESS OTHERWISE SPECIFIED DIMENSIONS ARE IN MM TOLERANCE DECIMALS ANGULAR X± 0.5 ± 2° XX± 0.25 DO NOT SCALE DRAWING		CUSTOMER NO.	DONGGUAN TIANRUI ELECTRONICS CO., LTD.
		DRAWN BY JANE	
 		CHECKED BY	TITLE Panel Mount fuse holder 4 Poles assembled
		APPROVED BY 	PART NO. SL-703H-04
P/N		DATE 2009/12/22	DRAWING NO. BA04092301
REV	B	SCALE	